

Accessories

We have developed a range of accessories to make your job easier.

Hoppers

Hand Loading Hopper

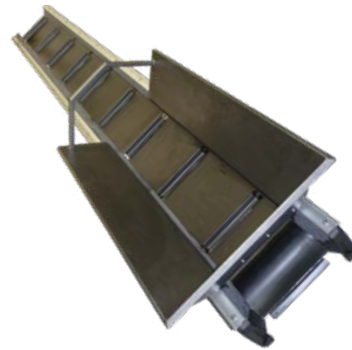
For loading by hand.

For 15" (40cm) conveyors - 40"L x 24.5"W x 8"H
(101cm x 62cm x 20cm)

Note: height at handle 13.5"

For 20" (52cm) conveyors - 40"L x 29"W x 8"H
(101cm x 74cm x 20cm)

Note: height at handle 13.5"



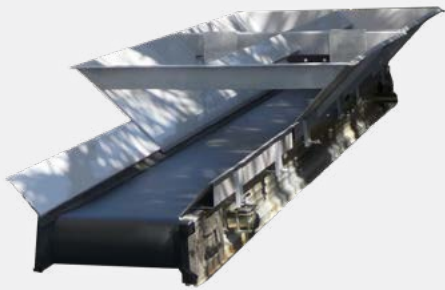
Skid Steer Hopper

For loading with full sized bucket.

Includes 3.25' (1.1m) side extensions.

For 15" (40cm) conveyors - 85"L x 37"W x 13"H
(2.2m x 0.94m x 0.3m)

For 20" (52cm) conveyors - 85"L x 40.5"W x 13"H
(2.2m x 1.02m x 0.3m)

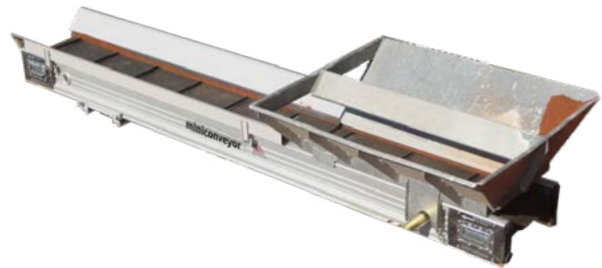


Minidigger Hopper

For loading by bobcat/skid steer. Includes 6.5' side extensions.

For 15" (40cm) conveyors - 42.5"L x 37"W x 13"H
(107cm x 97cm x 33cm)

For 20" (52cm) conveyors - 42.5"L x 42"W x 13"H
(107cm x 107cm x 33cm)



*Hoppers pictured on 10' (3m) conveyors. Longer units may require additional side extensions

Swivel Kit

Used on the discharge conveyor to enable the user to spread materials over a 230° radius.



Wheels

A set of wheels enables one person to move units on the job site (up to 3 at a time)



Side Extensions

Adds height to avoid spillage.

Comes in different heights and lengths.

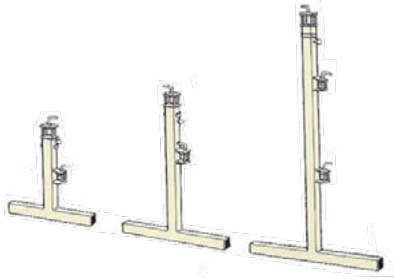
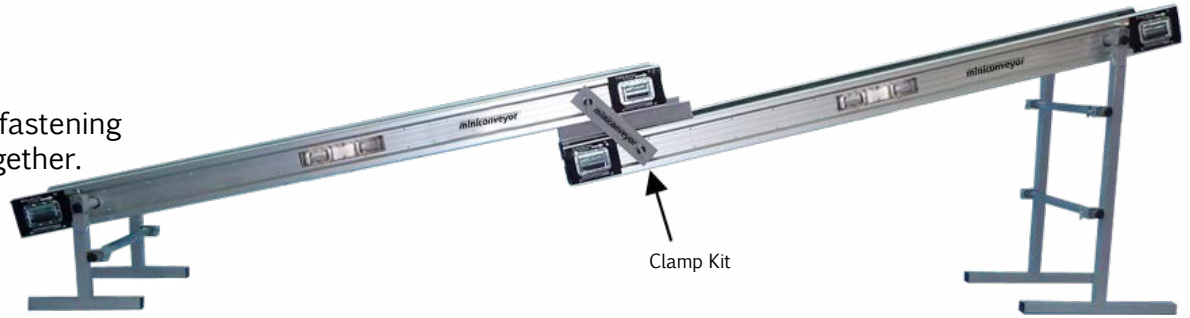
Different sizes are available to fit the needs of your conveyor length and hopper needs.



Accessories

Clamp Kit

For mechanically fastening Miniconveyors together.



Legs

Legs provide a means of raising the conveyors off the ground to the height needed for the job.

Small legs adjust from 1'10" to 2'9" (0.57m to 0.86m)

Medium legs from 2'7" to 4'3" (0.81m to 1.32m)

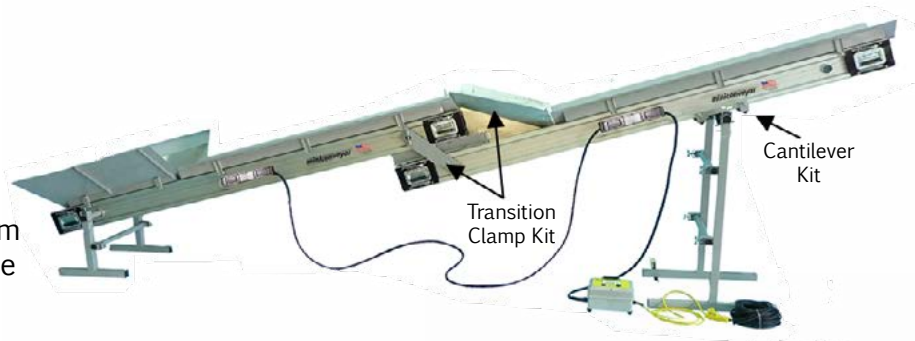
Large legs from 4'3" to 6'7" (1.32m to 2.06m)

All legs assemble with no tools needed.

*Leg Extensions Available

Transition Clamp Kit

Closes in the transition for a cleaner transfer of loose materials from one conveyor to the next.



Cantilever Kit

Gives the ability to support the discharge conveyor to overhang.

20' Kit

A kit to convert two 10' (3m) Miniconveyors into one 20' (6m) length.

